

**CORNER INVESTIGATION REPORT**

FS INDEX ID: X-5

CORNER: 1/4                      GCDB ID: 200140                      DATE: 5/3/2018  
TOWNSHIP: 3S                      STATE: OREGON  
RANGE: 7W                      COUNTY: TILLAMOOK  
SECTION: 31 & 32                      FOREST: SIUSLAW  
MERIDIAN: WILLAMETTE                      DISTRICT: HEBO

NFSL PROPERTY BOUNDARY CORNER?:  YES  NO

LINE(S) POSTED: NORTH - 2018 SOUTH - NONE

MAINTAINED:

GUARD POST(S): NORTH - 3 FT

CORNER HISTORY:

- (1) ESTABLISHED CORNER, SET POST & 2 BT'S.
- (2) FOUND ROTTED POST & 2 BT'S, SET IRON PIPE/BRASS CAP & 2 NEW BT'S.
- (3) FOUND BRASS CAP MONUMENT & BT'S AS REPORTED IN 1962.

MONUMENT FOUND/SET:

FOUND A 2-1/2"x30" GALVANIZED IRON PIPE WITH A 3-1/4" BRASS CAP PROJECTING 18" ABOVE GROUND & LEANING HEAVY TO THE SOUTHEAST IN LOOSE SOILS. DIG OUT AROUND MONUMENT TO BASE WHICH WAS FOUND TO BE IN SOLID CLAY LIKE SOILS AND DID NOT APPEAR TO HAVE MOVED FROM ITS ORIGINAL POSITION & CHECKS WITHIN REASON WITH THE RECORD ACCESSORIES. RESET FOUND MONUMENT DEEPER IN THE GROUND. CAP NOW PROJECTS 6" ABOVE GROUND LEVEL.

RECORD CORNER ACCESSORIES:

- AN INDETERMINATE SIZE ROTTED FIR STUMP BEARS, S1°45'E - 40.2 FT, WITH NO MARKS VISIBLE. (1)S8°E - 38.94 FT, (2)S1°E
- AN INDETERMINATE SIZE ROTTED FIR HIGH STUMP BEARS, N72°15'W - 17.0 FT, WITH NO MARKS VISIBLE. (1)N63°W - 15.84 FT, (2)N75°W
- A 45" FIR BEARS, N52°E - 18.8 FT, WITH A HEALED SINGLE BLAZE. (2)N54°E - 18.48 FT
- A 48" FIR BEARS, N54°15'W - 36.7 FT, WITH A HEALED SINGLE BLAZE. (2)N54°W - 36.96 FT

NEW CORNER ACCESSORIES:

NO NEW ACCESSORIES ESTABLISHED.

CORNER MAINTENANCE/OTHER INFO:

CLEAR BRUSH FROM AROUND MONUMENT & TO BT'S, BT FACES & A 6" BAND AT HEAD HEIGHT PAINTED RED. ADD NEW NAILS TO BT TAGS & ADD NEW TAGS WHERE NEEDED. MONUMENT SIZES ARE OUTSIDE DIAMETER & BT DIAMETERS ARE AT BREST HEIGHT.

NFSL LINES BEAR: N0°41'42"E - 2608.97 FT & (1)S0°02'E - 2640 FT

GEODETIC COORDINATES:

LATITUDE: N 45° 16' 01"  
 LONGITUDE: W 123° 35' 11"  
 ELLIPSOID HEIGHT:

DATUM: WGS 84

SOURCE: USGS QUAD MAP, FOR NAVIGATION TO CORNER.

DATE OF INVESTIGATION: 2/5/2018

REPORT BY: JONATHAN B. DREW II, PLS# 89396, CFedS# 1664

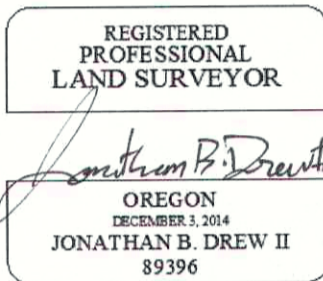
FIELD CREW: JONATHAN B. DREW II, PLS# 89396, CFedS# 1664  
 WAVERLY K. HAYNER, BLM SURVEY TECH  
 JORDAN REYES, USFS FIRE A.F.E.O.

DOCUMENTS ON FILE AT:

WILLAMETTE NATIONAL FOREST  
 3106 PIERCE PARKWAY, STE D  
 SPRINGFIELD, OREGON 97477

HISTORY OF VISITATIONS:

- (1)1894 - F. SHARP, GLO SURVEY
- (2)1962 - N. NEWTON, BLM RESURVEY, RW1/497 & 500
- (3)1977 - K. FOESTE, CSF# B-773



RECORD MEASUREMENTS:

METHOD OF MEASUREMENT:

TRIMBLE S7 TOTAL STATION. SEE RECORD OF SURVEY FOR BASIS OF BEARINGS & OTHER INFORMATION.

BT BEARINGS TO CENTER, DISTANCES TO AN ALUMINUM NAIL SET AT SIDE CENTER.

CAP DIAGRAM:



THIS DOCUMENT FILED IN CS OFFICE: YES  
OTHER DOCUMENT FILED WITH CS: RECORD OF SURVEY

